

INSTRUMENT APPROACH CHART - ICAO PLAN VIEW SCALE: 1:350 000

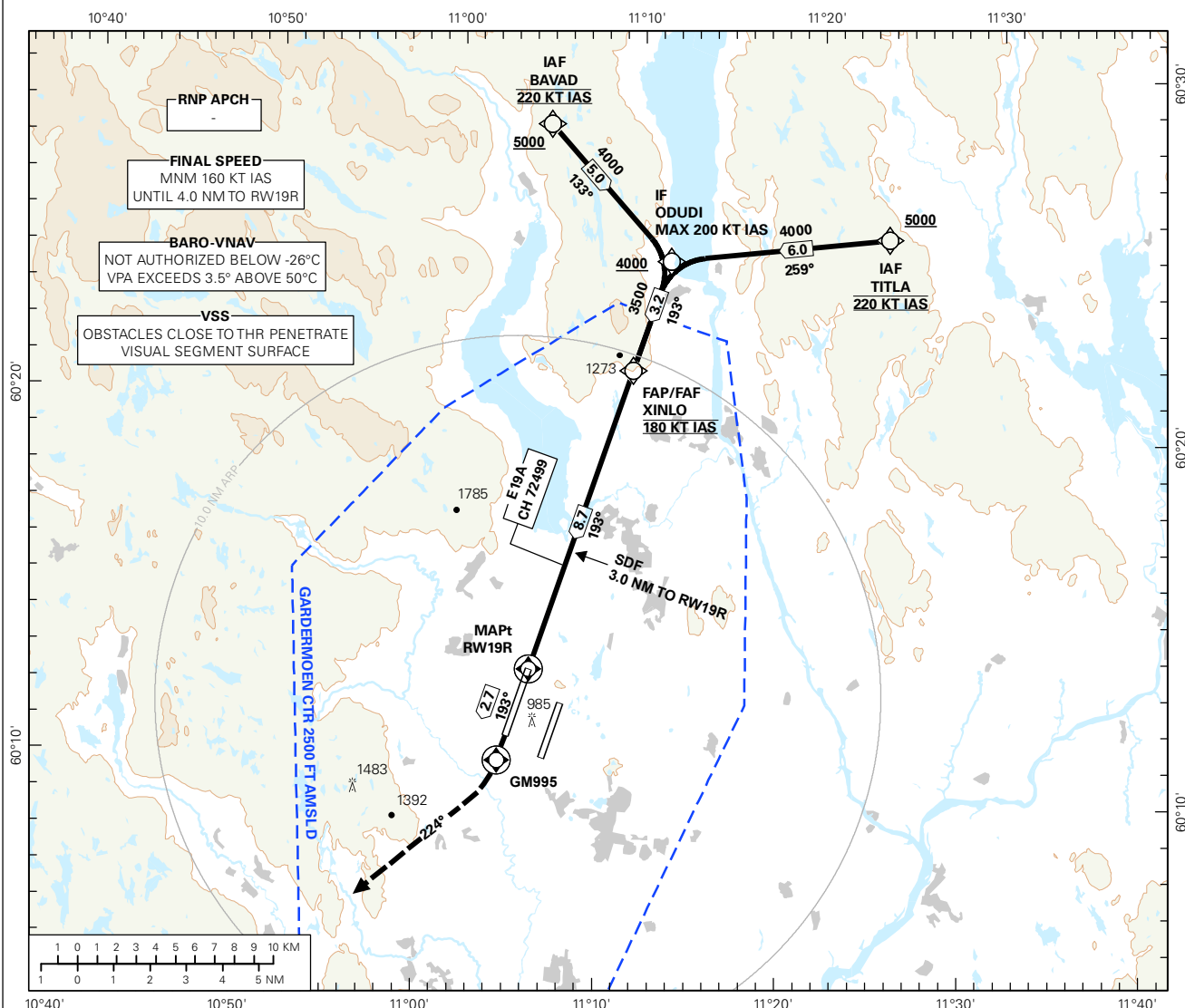
OSLO

GARDERMOEN

RNAV(GNSS) RWY 19R

TRANSITION ALTITUDE
7000

<div><div></div><div>3₉</div><div>MSA 25 NM ARP</div></div>	ATIS: 126.125		AD ELEV: 681	
	APP: 118.475 120.450		THR ELEV: 675	DIST IN NM
	DIR: 136.400 (119.975)		HGT RELATED TO THR RWY 19R	
	FIN: 128.900		ELEV, ALT AND HGT IN F	
	TWR: 118.300 (118.700)		CIRCLING HGT RELATED TO AD ELEV	
	GND: 121.600		BEARINGS ARE MAGNETIC - VAR 2.8 ° E (2015)	



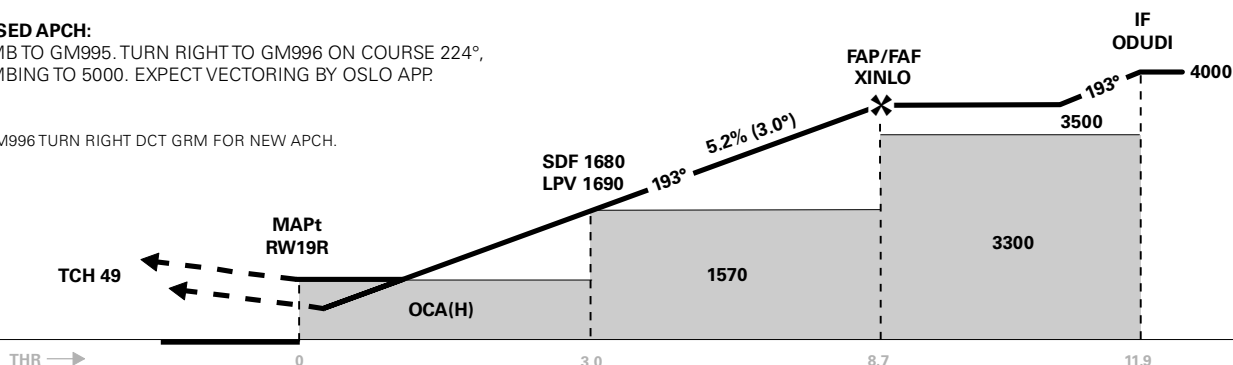
DIST TO RW19R	8	7	6	5	4	3	2	1
ALT (HGT)	3280 (2605)	2960 (2285)	2640 (1965)	2320 (1645)	2000 (1325)	1680 (1005)	1370 (695)	1050 (375)

MISSED APCH:

CLIMB TO GM995. TURN RIGHT TO GM996 ON COURSE 224°, CLIMBING TO 5000. EXPECT VECTORING BY OSLO APP.

RCF:

AT GM996 TURN RIGHT DCT GRM FOR NEW APCH.



CAT OF ACFT		A	B	C	D	FINAL APCH	DIST FAF - MAPt: 8.7						
OCA(H) STRAIGHT - IN	LPV 3.1%*	930 (255)	940 (265)	950 (275)	960 (285)								
	LPV 2.5%*	1020 (345)	1030 (355)	1040 (365)	1050 (375)								
	LNAV/VNAV	970 (295)	980 (305)	1000 (325)	1030 (355)								
CIRCLING	LNAV	1040 (365)		1060 (385)	1080 (405)	SPEED	KT	70	90	120	150	180	
		1040 (365)		1060 (385)	1080 (405)	TIME	MIN:SEC	07:29	05:49	04:22	03:30	02:55	
		1280 (599)		1920 (1239)	2230 (1549)	ROD	FT/MIN	370	480	635	795	955	
NOTE: CIRCLING W OF RWY ONLY. *MINIMUM MISSED APCH CLIMB GRADIENT													

CHANGES: SPEED RESTRICTIONS.

Avinor

17 SEP 2015

RECOMMENDED RNAV PROCEDURE CODING

ENGM RNAV(GNSS) RWY 19R										
Serial Number	Path Descriptor	Waypoint Identifier	Fly-over	Course °M(°T)	MAG VAR	DIST (NM)	Turn Dir	ALT (FT)	Speed (KT)	VPA/ TCH
010	IF	TITLA	-	-	-	-	-	A5000+	K220	-
020	TF	ODUDI	-	259 (261.4)	-	6.0	-	A4000+	K200-	-
010	IF	BAVAD	-	-	-	-	-	A5000+	K220	-
020	TF	ODUDI	-	133 (135.9)	-	5.0	-	A4000+	K200-	-
030	TF	XINLO	-	193 (196.0)	-	3.2	-	A3500+	K180	-
040	TF	RW19R	Y	193 (196.1)	-	8.7	-	-	-	-3.0/15
050	TF	GM995	Y	193 (196.0)	-	2.7	-	-	-	-
060	CF	GM996	-	224 (227.0)	-	-	-	A5000	-	-

Note: Recommended RNAV procedure coding is based on ARINC 424-15 and is provided solely to indicate which procedure design protection areas were used in the Instrument Flight Procedure Design process.

Note: Published OCA(H) values are obstacle clearance values. Decision heights (DH) below 250 FT shall not be used due to APV approach operation Type A limitations.

FAS DATA BLOCK

Operation type	0	LTP/FTP ellipsoidal height	244.2
SBAS Provider	1	FPAP latitude	601105.0455N
Airport Identifier	ENGM	FPAP longitude	0110424.9250E
Runway	RW19R	Threshold crossing height	15
Approach performance designator	0	TCH units	M
Route Indicator	-	Glide path angle	3.0
Reference path data selector	0	Course width at threshold	105
Reference path Identifier	E19A	Length offset	32
LTP/FTP latitude	601257.8380N	Horizontal alert limit (HAL)	40
LTP/FTP longitude	0110529.9865E	Vertical alert limit (VAL)	50
		PRECISION APPROACH PATH CRC REMAINDER	C3AD8ED3

NON FAS DATA BLOCK FIELDS

LTP Ortometric Height	205.8
FPAP Ortometric Height	199.8